

**Giacche Chef** bottone estraibile



Art.  
10M2035N

226

**Art. 10M2035N**

GIACCA JEGHER  
JEGHER JACKET

Poliestere - Polyester 65%

Cotone - Cotton 35%

S - M - L - XL - XXL - XXXL -

**XXXXL**

NERO - BLACK

Taschino sul petto - Taschino  
porta penna sulla manica -  
Bottoni estraibili  
*Breast pocket - Pen pocket on  
sleeve - Removable buttons*

**Art. 10M2035N**

**Colori • Colours**



Inseri in rete



Art.  
10M2035N



Art.  
10M2072N

Inserti in rete nera  
Black network fabric panels



**Art. 10M2072N**

GREMBIULE ALEX  
ALEX APRON  
Poliestere - Polyester 65%  
Cotone - Cotton 35%  
TAGLIA UNICA - ONE SIZE  
NERO/ROSSO - BLACK/RED  
Misure: 90x90 cm

**Art. 416DIVA**

TOQUE  
TOQUE  
Poliestere - Polyester 65%  
Cotone - Cotton 35%  
TAGLIA UNICA - ONE SIZE  
NERO/ROSSO - BLACK/RED

ACCESSORI



Art.  
416DIVA

Art. 10M2072N

Colori • Colours





Inserti in rete



Easy Care  
Facile Stiro



Tessuto Satin



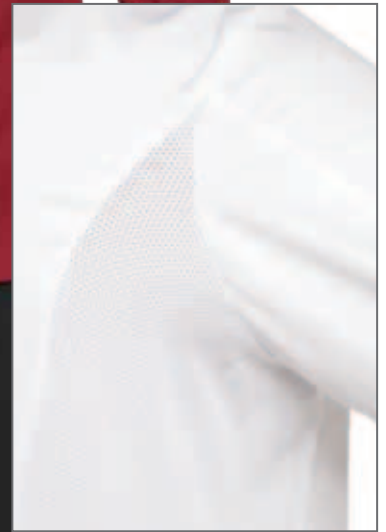
Art.  
10M2035R



**NOVITA'**

Art.  
11P08G11

Inserti in rete  
Network fabric panels



228

**Art. 10M2035R**

GIACCA JEGHER  
JEGHER JACKET  
Cotone - Cotton 60%  
Poliestere - Polyester 40%  
S - M - L - XL - XXL - XXXL - **XXXXL**  
BIANCO - WHITE

**Art. 11P08G11**

GIACCA MASSIMO  
MASSIMO JACKET  
Cotone - Cotton 60%  
Poliestere - Polyester 40%  
S - M - L - XL - XXL - XXXL - **XXXXL**  
ROSSO - RED

**Art. 416DIVA**

TOQUE  
TOQUE  
Cotone - Cotton 60%  
Poliestere - Polyester 40%  
TAGLIA UNICA - ONE SIZE  
BIANCO/ROSSO - WHITE/RED

**Art. 10M2072**

GREMBIULE ALEX  
ALEX APRON  
Cotone - Cotton 60%  
Poliestere - Polyester 40%  
TAGLIA UNICA - ONE SIZE  
BIANCO/ROSSO - WHITE/RED  
Misure: 90x90 cm

Taschino sul petto - Taschino porta  
penna sulla manica -  
Bottoni estraibili  
Breast pocket - Pen pocket on sleeve  
- Removable buttons

Taschino sul petto - Taschino porta  
penna sulla manica -  
Bottoni estraibili  
Breast pocket - Pen pocket on sleeve  
- Removable buttons

ACCESSORI

Art.  
416DIVA



**Art. 10M2035R**

Colori • Colours



**Art. 11P08G11**

Colori • Colours





Easy Care  
Facile Stiro



Tessuto Satin

**NOVITA'**

Art.  
10M2035R

Art.  
11P08G11

Inseri in rete  
Network fabric panels



Art.  
10M2072

**NOVITA'**

Art.  
11P08H17

**Art. 11P08H17**

GREMBIULE ALEX

ALEX APRON

Cotone - Cotton 60%

Poliestere - Polyester 40%

TAGLIA UNICA - ONE SIZE

ROSSO/BIANCO - RED/WHITE

Misure: 90x90 cm

**Art. 10M2072**

**Colori • Colours**



**Art. 11P08H17**

**Colori • Colours**



**Giacche chef** bottone estraibile



Inseri in rete



Easy Care  
Facile Stiro



Tessuto Satin

**NOVITA'**



Art. 11P08G13



Art. 11P08G12

Inseri in rete  
Network fabric panels



230

**Art. 11P08G13**

GIACCA JEGHER  
JEGHER JACKET  
Cotone - Cotton 60%  
Poliestere - Polyester 40%  
S - M - L - XL - XXL - XXXL - **XXXXL**  
BIANCO - WHITE

**Art. 11P08G12**

GIACCA MASSIMO  
MASSIMO JACKET  
Cotone - Cotton 60%  
Poliestere - Polyester 40%  
S - M - L - XL - XXL - XXXL - **XXXXL**  
BLUETTE - ROYAL

**Art. 416DIVA**

TOQUE  
TOQUE  
Cotone - Cotton 60%  
Poliestere - Polyester 40%  
TAGLIA UNICA - ONE SIZE  
BIANCO/BLUETTE - WHITE/ROYAL

**Art. 11P08H62**

GREMBIULE ALEX  
ALEX APRON  
Cotone - Cotton 60%  
Poliestere - Polyester 40%  
TAGLIA UNICA - ONE SIZE  
BIANCO/BLUETTE - WHITE/ROYAL  
Misure: 90x90 cm

Taschino sul petto - Taschino porta  
penna sulla manica -  
Bottoni estraibili  
Breast pocket - Pen pocket on sleeve  
- Removable buttons

Taschino sul petto - Taschino porta  
penna sulla manica -  
Bottoni estraibili  
Breast pocket - Pen pocket on sleeve  
- Removable buttons

**ACCESSORI**

Art. 416DIVA



**Art. 11P08G13**

Colori • Colours



**Art. 11P08G12**

Colori • Colours



**NOVITA'**



Easy Care  
Facile Stiro



Tessuto Satin



Art.  
11P08H62

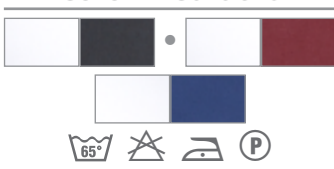
Art.  
11P08H17

Inseri in rete  
Network fabric panels



**Art. 11P08H17**  
GREMBIULE ALEX  
ALEX APRON  
Cotone - Cotton 60%  
Poliestere - Polyester 40%  
TAGLIA UNICA - ONE SIZE  
BLUETTE/BIANCO - ROYAL/WHITE  
Misure: 90x90 cm

**Art. 11P08H62**  
Colori • Colours



**Art. 11P08H17**  
Colori • Colours





Art.  
10M1618

Art.  
10M1103



Art.  
10M1224



232

**Art. 10M1618**  
GIACCA APOLLO  
APOLLO JACKET  
Cotone - Cotton 100% 190 GR./MTQ  
XS - S - M - L - XL - XXL - XXXL  
BIANCO - WHITE  
Con toppe - Bottone estraibile -  
Taschino sul petto  
With patches - Removable buttons -  
Breast pocket

**Art. 10M1103**  
GREMBIULE FRANCIA  
FRANCIA APRON  
Poliestere - Polyester 65%  
Cotone - Cotton 35% 200 GR./MTQ  
TAGLIA UNICA - ONE SIZE  
NERO - BLACK  
1 Tasca - 1 Pocket

**Art. 10M1224**  
GIACCA APOLLO  
APOLLO JACKET  
Poliestere - Polyester 65%  
Cotone - Cotton 35% 200 GR./MTQ  
XS - S - M - L - XL - XXL - XXXL  
NERO - BLACK  
Con toppe - Bottone estraibile -  
Taschino sul petto  
With patches - Removable buttons -  
Breast pocket

**Art. 10M416**  
CAPPELLO CUOCO  
CHEF HAT  
Poliestere - Polyester 65%  
Cotone - Cotton 35%  
TAGLIA UNICA - ONE SIZE  
COL. P400

ACCESSORI

**Art. 10M1618**  
Colori • Colours



**Art. 10M1103**  
Colori • Colours



Art.  
10M416



Art.  
10M1224



Art.  
10M1224



Art.  
10M1103



**Art. 10M416**  
CAPPELLO CUOCO  
CHEF HAT  
Poliestere - Polyester 65%  
Cotone - Cotton 35%  
TAGLIA UNICA - ONE SIZE  
COL. P239

**Art. 10M1224**  
GIACCA APOLLO  
APOLLO JACKET  
Poliestere - Polyester 65%  
Cotone - Cotton 35% 200 GR./MTQ  
XS - S - M - L - XL - XXL - XXXL  
BEIGE - BEIGE  
Con toppe - Bottone estraibile -  
Taschino sul petto  
With patches - Removable buttons -  
Breast pocket

**Art. 10M1224**  
GIACCA APOLLO  
APOLLO JACKET  
Poliestere - Polyester 65%  
Cotone - Cotton 35% 200 GR./MTQ  
XS - S - M - L - XL - XXL - XXXL  
MARRONE - BROWN  
Con toppe - Bottone estraibile -  
Taschino sul petto  
With patches - Removable buttons -  
Breast pocket

**Art. 10M1103**  
GREMBIULE FRANCIA  
FRANCIA APRON  
Poliestere - Polyester 65%  
Cotone - Cotton 35% 200 GR./MTQ  
TAGLIA UNICA - ONE SIZE  
MARRONE - BROWN  
1 Tasca - 1 Pocket

## ACCESSORI



Art.  
10M416

Art. 10M1224

Colori • Colours



**Giacche Chef** bottone estraibile



La scelta di *Massimo Bottura*

Art.  
1175

234

Ottima vestibilità - Ampio giro manica  
Excellet fit



Bottoni in tessuto fatti a mano -  
Non estraibili - Lavabili in lavatrice  
Fabric covered button - No removable -  
Machine washable



**Art. 1175**

GIACCA  
MB JACKET  
Cotone - Cotton 100%  
165 GR/MTQ  
S - M - L - XL - XXL - XXXL  
BIANCO - WHITE

Taschino sul petto - Taschino porta  
pena sulla manica  
Breast pocket - Pen pocket on sleeve



Inserti in rete

Colori • Colours



La giacca indossata dallo chef  
Massimo Bottura e dallo staff  
del suo ristorante "Osteria  
Francescana" di Modena

Inserti in rete  
Network fabric panels



Idrorepellente a olio e acqua  
Water and oil resistant



Art.  
10M1533



**Art. 10M1533**  
GIACCA ROSSANO  
ROSSANO JACKET  
Cotone - Cotton 100%  
170 GR./MTQ  
XS - S - M - L - XL - XXL - XXXL  
BIANCO - WHITE

Bottoni estraibili  
Removable buttons



Inserti in rete



No Stiro

Colori • Colours



**Giacche Chef** bottone estraibile



236

**Art. 11P08G14**

**Art. 11P08G15**

Inserti in rete  
Network fabric panels



**Art. 11P08G14**  
GIACCA BRASILE  
BRASILE JACKET  
Cotone - Cotton 100%  
S - M - L - XL - XXL - XXXL - **XXXXL** -  
**XXXXXL**  
BIANCO - WHITE

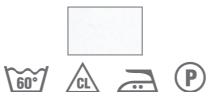
**Art. 11P08G15**  
GIACCA BRASILE  
BRASILE JACKET  
Poliestere - Polyester 65%  
Cotone - Cotton 35%  
S - M - L - XL - XXL - XXXL - **XXXXL** -  
**XXXXXL**  
NERO - BLACK

Taschino sul petto - Taschino porta penna  
sulla manica - Bottoni estraibili  
Breast pocket - Pen pocket on sleeve -  
Removable buttons

Taschino sul petto - Taschino porta penna  
sulla manica - Bottoni estraibili  
Breast pocket - Pen pocket on sleeve -  
Removable buttons

**Art. 11P08G14**

**Colori • Colours**

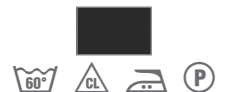


**Art. 11P08G15**

**Colori • Colours**



Inserti in rete



Art.  
10M1619

Inseri in rete  
Network fabric panels



238

**Art. 10M1619**  
GIACCA NETTUNO  
NETTUNO JACKET  
Cotone - Cotton 100%  
165 GR./MTQ  
XS - S - M - L - XL - XXL - XXXL  
BIANCO - WHITE

Bottoni estraibili - Taschino porta  
penna sulla manica  
Removable buttons - Pen pocket  
on sleeve



Inseri in rete

Colori • Colours



Art.  
1566



Art.  
7M216



**Art. 1566**  
GIACCA CUOCO  
CHEF JACKET  
Cotone - Cotton 100%  
165 GR./MTQ  
XS - S - M - L - XL - XXL - XXXL  
BIANCO - WHITE

Bottoni estraibili - Taschino porta  
penna sulla manica  
Removable buttons - Pen pocket  
on sleeve

**Art. 7M216**  
GIACCA CUOCO NICHOLAS  
CHEF JACKET NICHOLAS  
Cotone - Cotton 100%  
165 GR./MTQ  
S - M - L - XL - XXL - XXXL  
BIANCO - WHITE

Bottoni estraibili - Taschino porta  
penna sulla manica  
Removable buttons - Pen pocket  
on sleeve

Gabardine di cotone egiziano pettinato -  
sanforizzato - mercerizzato traspirante - antiodore  
Egyptian drill cotton sanforized  
perspiring - antismelling

Art. 1566

Colori • Colours



Art. 7M216

Colori • Colours





Art.  
141



Art.  
101

240

**Art. 141**

GIACCA CUOCO  
CHEF JACKET

Cotone - Cotton 100%  
190 GR./MTQ

XS - S - M - L - XL - XXL - XXXL

BIANCO - WHITE

Bottoni Estraibili - Removable buttons

**Art. 101**

GIACCA CUOCO  
CHEF JACKET

Cotone - Cotton 100%  
190 GR./MTQ

XS - S - M - L - XL - XXL - XXXL

BIANCO - WHITE

Bottoni Estraibili - Removable buttons

**Art. 101K**

GIACCA CUOCO  
CHEF JACKET

Cotone - Cotton 100%  
190 GR./MTQ

**XXXXL**

BIANCO - WHITE

Bottoni Estraibili - Removable buttons

**Art. 99-B**

BOTTONE BIANCO  
WHITE BUTTON

**Art. 99-C**

BOTTONE COLORATO  
COLOURED BUTTON

ACCESSORI



Art.  
99-C

Art.  
99-B

**Colori • Colours**



Art.  
7M202



**Art. 7M202**  
GIACCA ANDREAS  
ANDREAS JACKET  
Cotone - Cotton 100%  
165 GR./MTQ  
S - M - L - XL - XXL - XXXL  
BIANCO - WHITE

**Colori • Colours**



Art.  
7M1953

Art.  
7M1166

242

**Art. 7M1953**  
CASACCA PECHINO  
PECHINO SMOCK  
Poliestere - Polyester 65%  
Cotone - Cotton 35%  
S - M - L - XL - XXL  
NERO - BLACK  
2 Tasche - 2 Pockets

**Art. 7M1166**  
CASACCA SHANGAI  
SHANGAI SMOCK  
Poliestere - Polyester 65%  
Cotone - Cotton 35%  
XS - S - M - L - XL - XXL  
NERO - BLACK  
2 Tasche - 2 Pockets

Colori • Colours



Art.  
7M1165

Art.  
7M1952

**Art. 7M1952**

CASACCA PECHINO  
PECHINO SMOCK

Poliestere - Polyester 65%  
Cotone - Cotton 35%

S - M - L - XL - XXL

BIANCO - WHITE

2 Tasche - 2 Pockets

**Art. 7M1165**

CASACCA SHANGAI  
SHANGAI SMOCK

Poliestere - Polyester 65%  
Cotone - Cotton 35%

XS - S - M - L - XL - XXL

BIANCO - WHITE

2 Tasche - 2 Pockets

**Colori • Colours**

